

# AEB Architectural Excellence Prize Winner 2024

Prepared by DAUP

2024



### 1. First Prize: Haya Nasr A M Aljehani

Qatar is recognized as the world's dominant seller of (LNG) liquefied natural (Al Jazeera, 2017). Qatar's dramatic rise on the global stage is directly linked to its abundant reserves of oil and natural gas. The discovery and strategic development of these energy resources have fueled the nation's remarkable economic growth and positioned it as a formidable competitor among nations. Qatar's transformation from a modest desert nation to a prosperous and influential player on the world stage stands as a testament to the profound impact of its oil and gas industry.

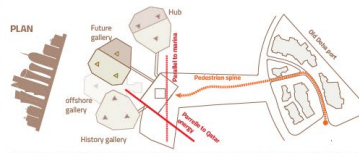
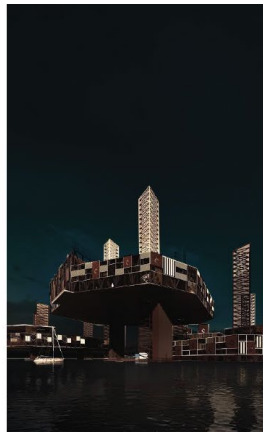
The verse from the Quran emphasizes the importance of acknowledging God's blessings. In the context of the oil and gas industry, it highlights our responsibility to share and utilize these resources wisely for the benefit of society.

#### CONCEPT

قال تعالى  
وَأَمَّا بِنِعْمَةِ رَبِّكَ فَحَدِّثْ  
سورة الضحى (11)

And proclaim the bounty of your Lord. \*11

The notion of recycling the jack up rig is to tell the story of the industrial and economical revolution that is witnessed in Qatar through these structure, by recycling them there legacy, prosperity and story is transferred into the younger generation and to the world as a national pride



The site inclines upward to 10 meters to continue the journey with two axis parallel to important landmarks, the visitor center is considered as an attraction point



A plaza is situated in front of the visitor center for the users to perceive the design. The visitor center architectural language is inspired from the Jack-up rig and the center is considered as an attraction point.

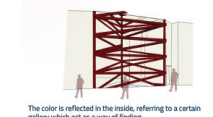


#### DESIGN FEATURES

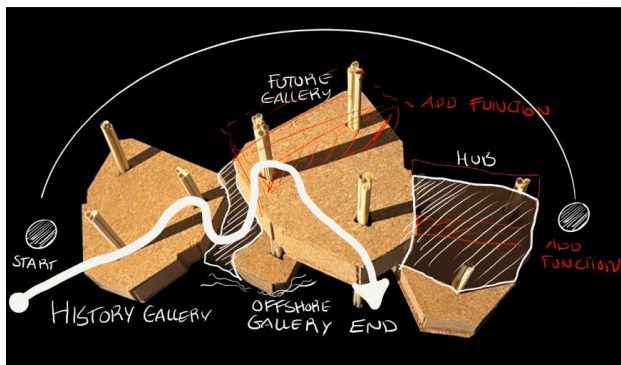


Galleries are located on different levels  
Maroon: History gallery and hub to resemble the Qatar identity  
Blue: Reassembling the offshore journey  
Yellow: Resembles a bright future

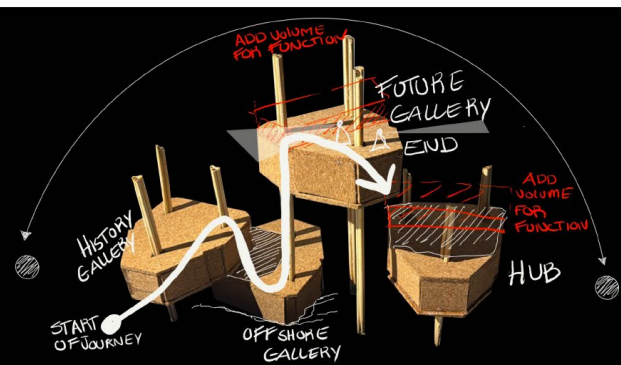
The colors are scattered on the exposed facade to shape a coherent building, with a panel that resembles the power of the oil and gas drop

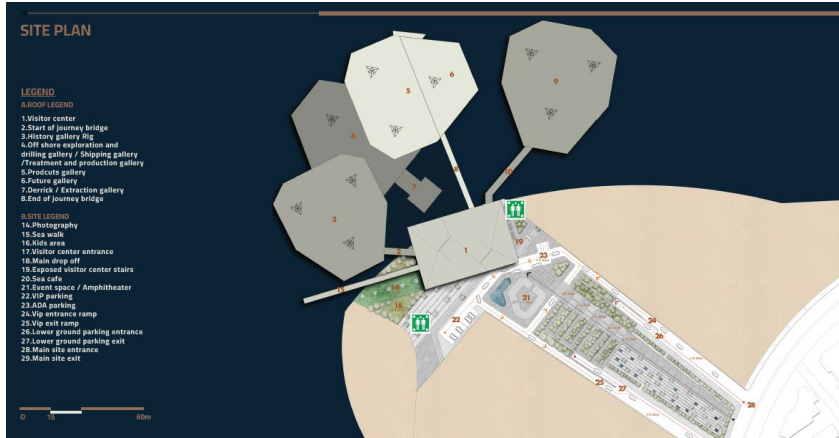


#### TOP VIEW



#### ELEVATION VIEW



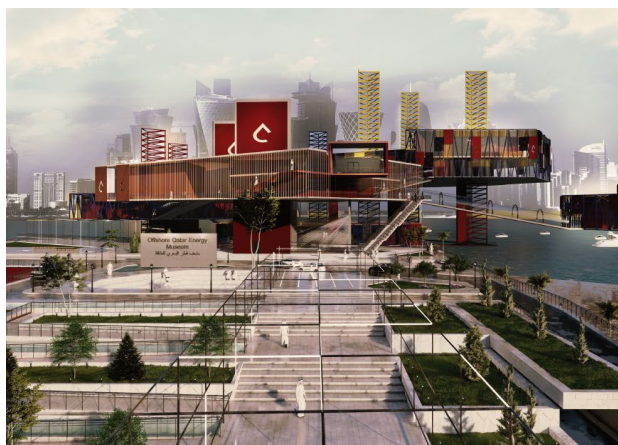
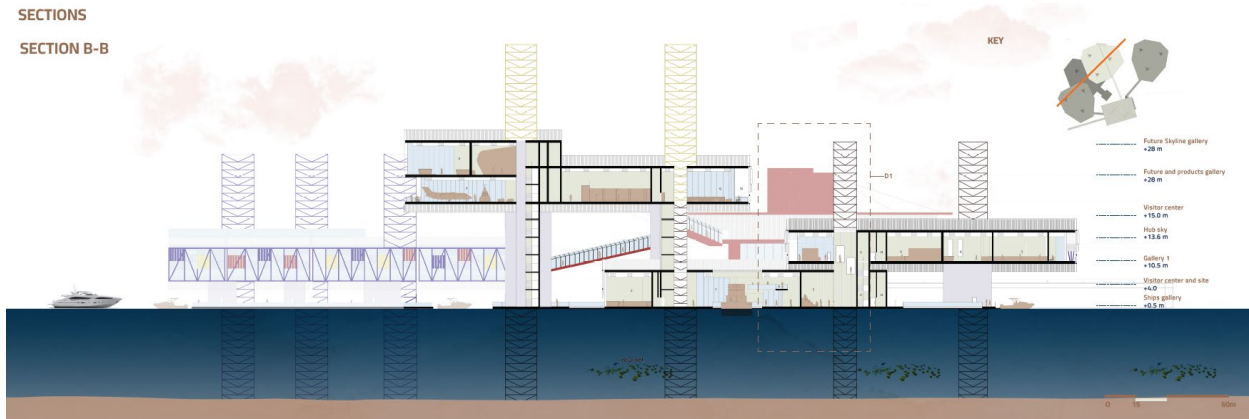


Framed pedestrian design element as a directive pedestrian spine leading the visitor with from the old Doha port to the visitor center that stand as an attraction point



VIPs drop off at the main entrance, while public users use the public parking below, accessing the visitor center via elevator or staircase.

**SECTIONS**  
**SECTION B-B**





## 2. Second Prize: Louna Hussam Albatarani

The plan also focuses on academic development, emphasizing the importance of refining curricular structures and assessment methodologies. This approach ensures that the department's educational offerings remain comprehensive and relevant to contemporary architectural education.

### Project Justification

According to UNHCR (2023), the rate of displaced people have been increasing by the years. At the end of 2022, the number of globally displaced people have increased by 21%, making the total number of displacement 108.4 million.

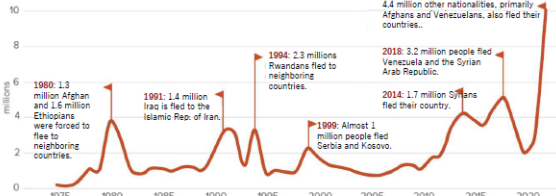
This displacement is a result of persecution, violence, conflict, human rights violation, or events that disturb public order.

MORE THAN **1 IN 74** PEOPLE  
WORLDWIDE ARE FORCIBLY DISPLACED

This number is estimated to keep on increasing in 2023. It is estimated that the total number of displaced people will exceed 110 million (UNHCR, 2023).

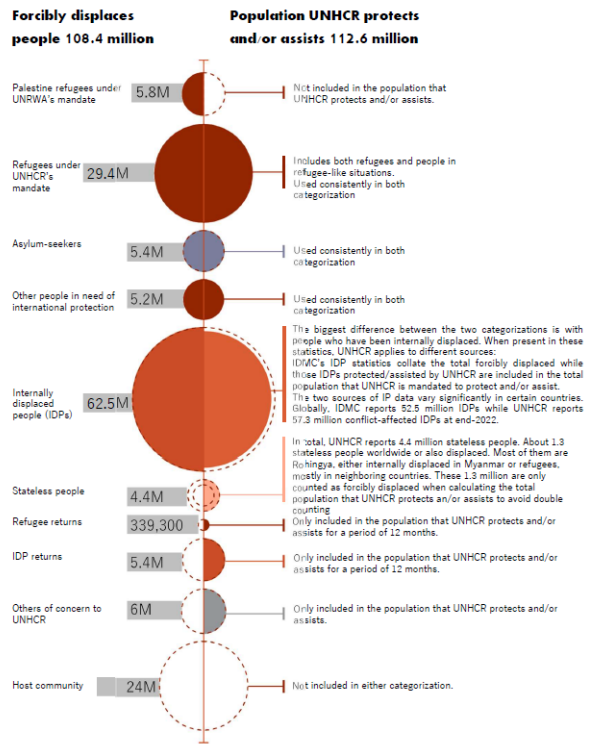


#### Refugees, asylum-seekers, and other people in need of international protection displaced during each year | 1975 - 2022



The graph shows the increase of the number of displaced people between 1975 – 2022 and the reasons for such increase (UNHCR, 2023) edited by author.

The vulnerability experienced by refugees and internally displaced individuals (IDPs) stretches beyond the threats of war, it includes challenges such as limited access to food, healthcare, shelter, jobs, clean water, and sanitation. These hardships also involve the loss of communal ties and the displacement from their homes (Costs of War Project, n.d.).

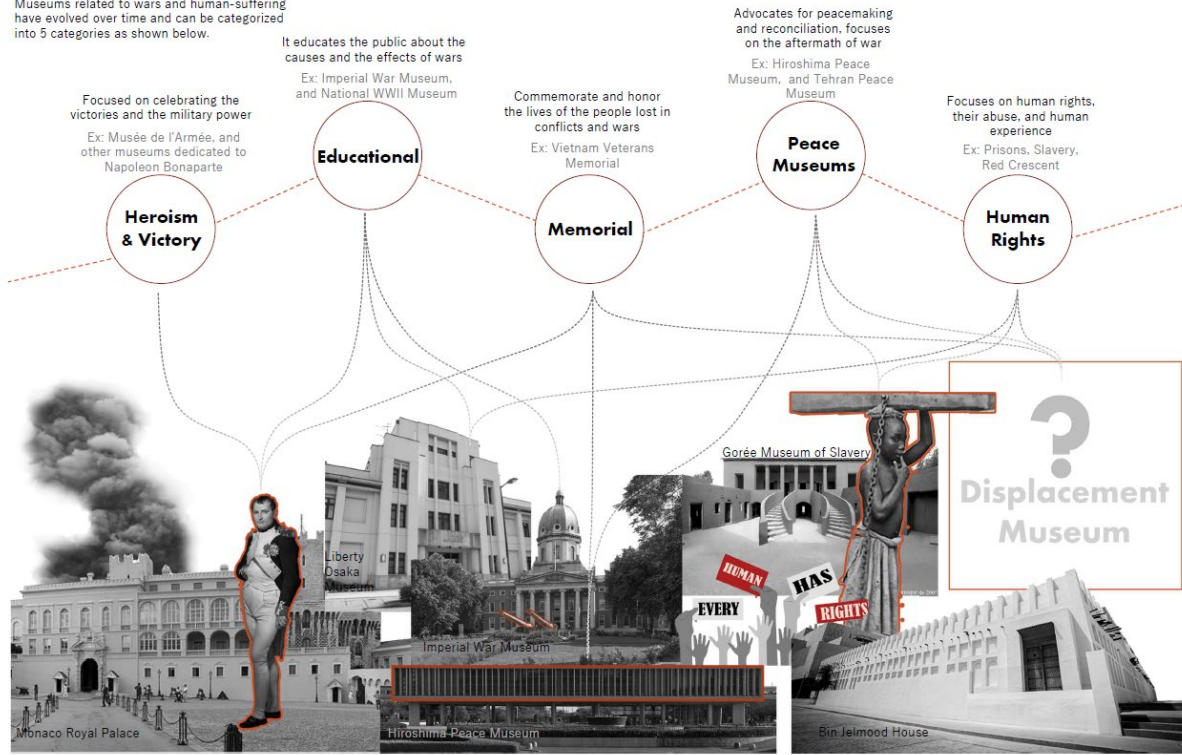


The diagram shows the type of displacement population and who is protected under the UNHCR mandate (UNHCR, 2023) edited by author.

• Costs of War Project, (n.d.)  
• UNHCR (2023)

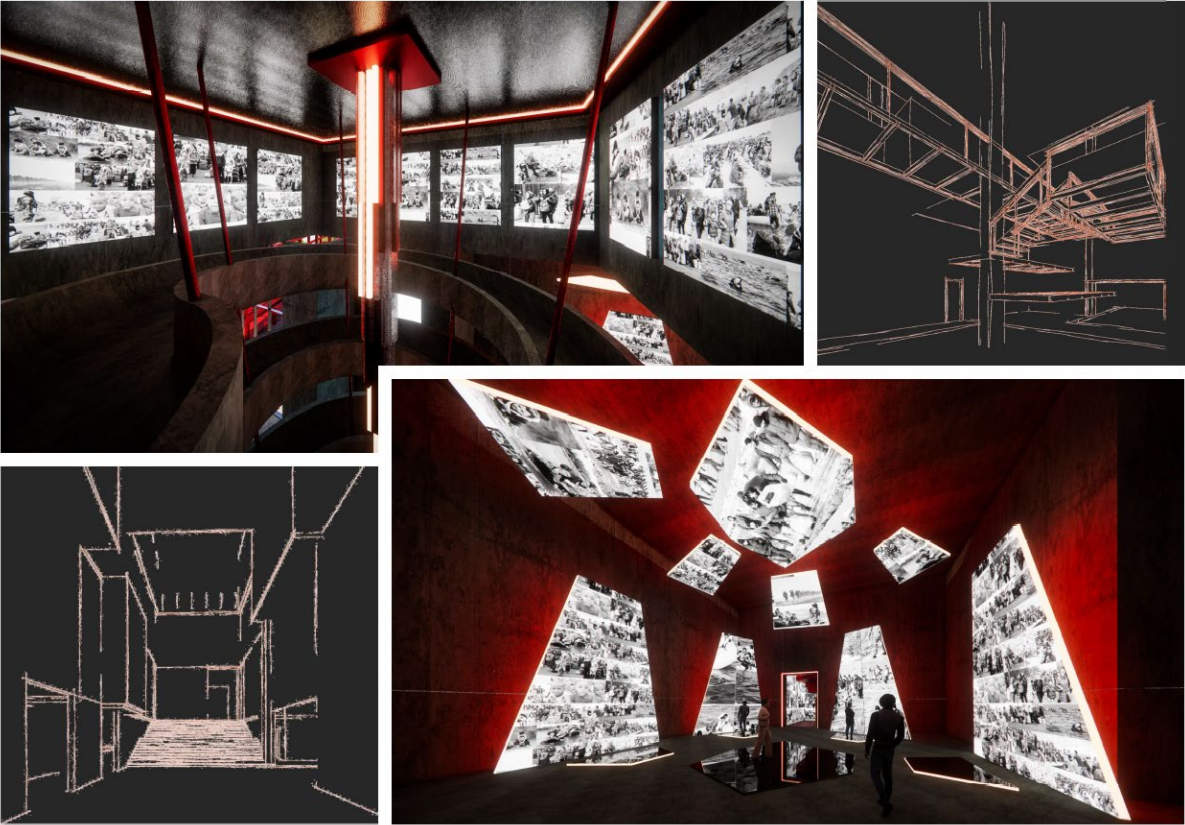
## Historical Background

Museums related to wars and human-suffering have evolved over time and can be categorized into 5 categories as shown below.



• Winter (2013) • Duffy (2001)  
 • Purbrick (2011) 11







# Floor Plans

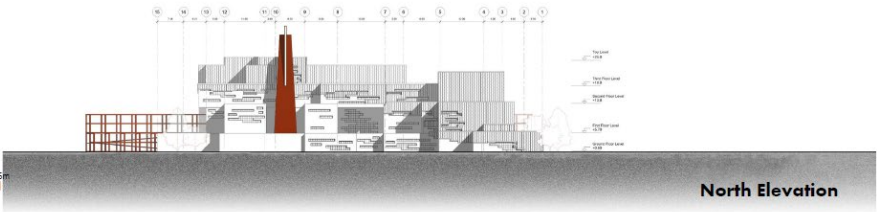
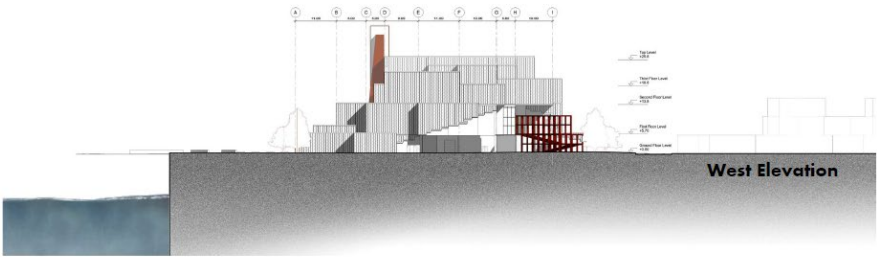
## First Floor Plan





# Elevations

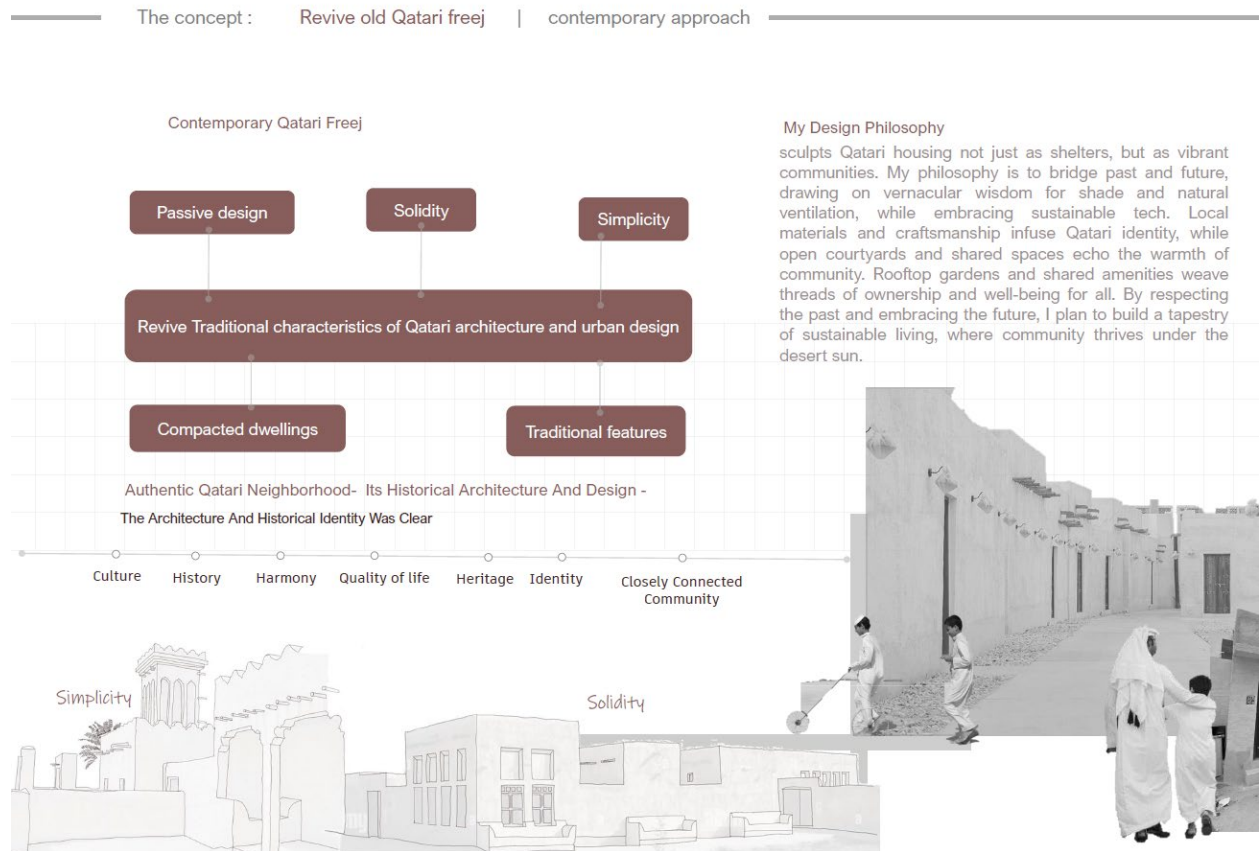
Building in motion





### 3. Third Prize: Noor Hamad H A Al-Jehani

The plan also focuses on academic development, emphasizing the importance of refining curricular structures and assessment methodologies. This approach ensures that the department's educational offerings remain comprehensive and relevant to contemporary architectural education.







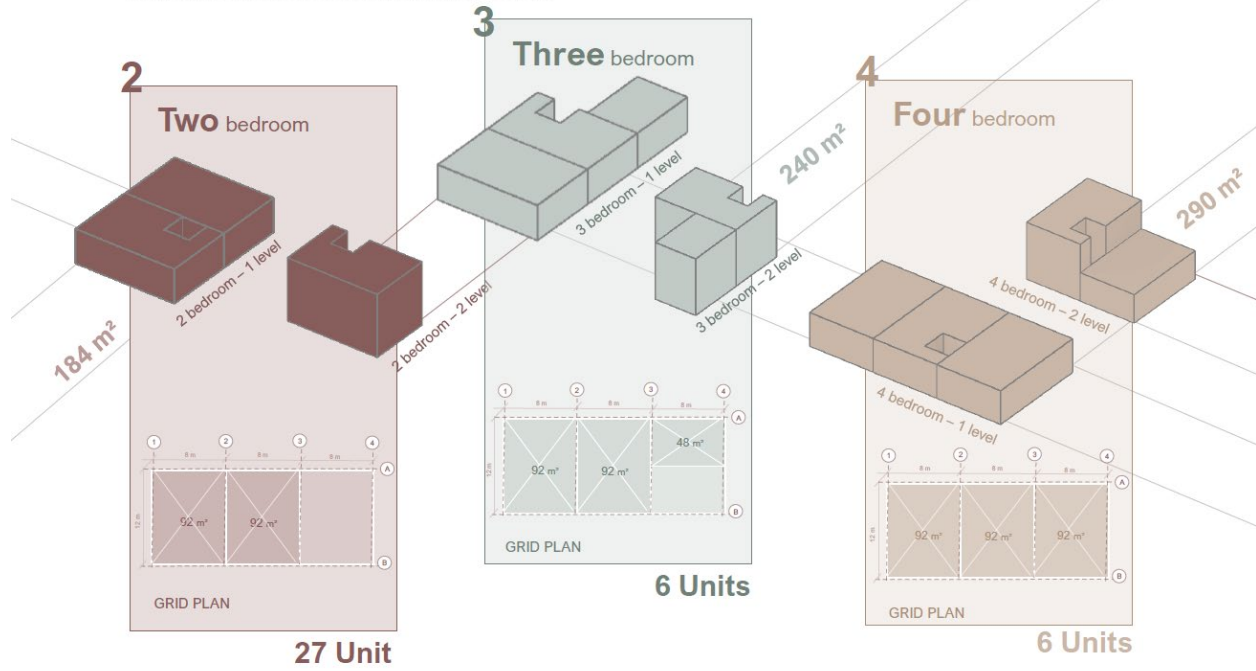




Apartment typologies

ASEL collective housing

The Aseel Collective Housing Project offers three distinct apartment types, each available as either single-floor or duplex units. Embracing Qatari societal customs and traditions, the design harmoniously incorporates elements of traditional Qatari and Arabic architecture into a contemporary framework, bracing traditional architectural features with a modern aesthetic.





Design Development sections | scale 1:100 00

