

November 2023 Newsletter

Recent Publications

Paper publication: Livestock Practices: Traditional Animal Holdings Classification in Qatar 2020 Towards Sustainable Food Security

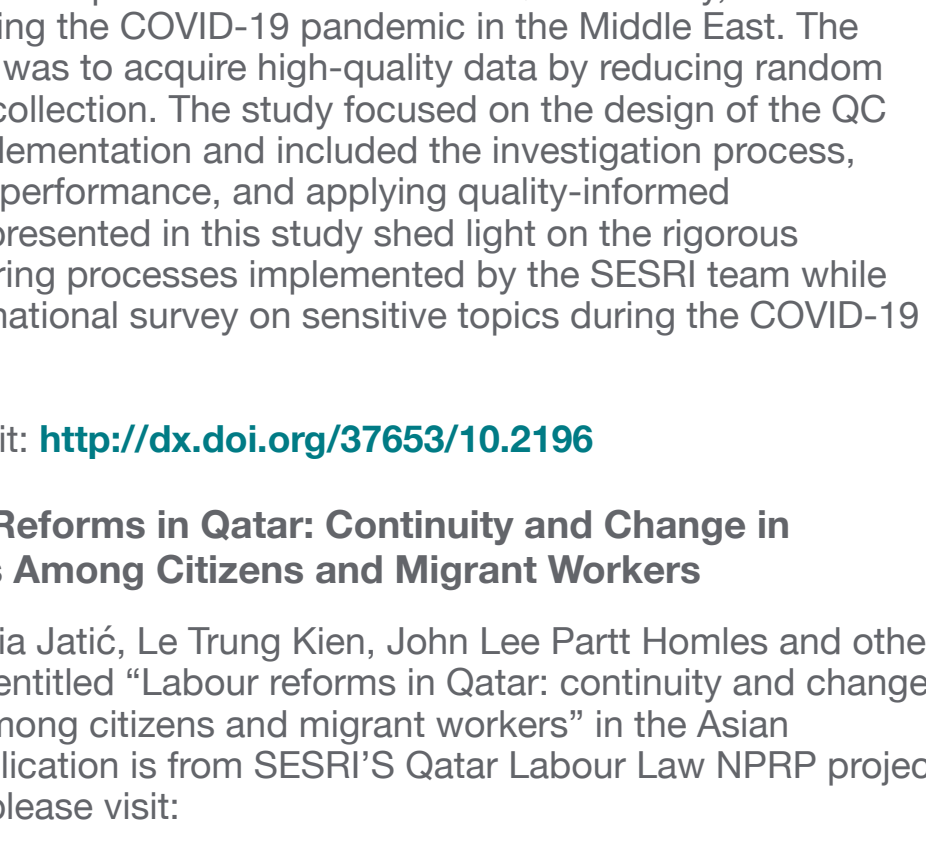
Dr. Elmogiera Elawad, researcher Mohammed Agied, and others published a research paper titled "Livestock Practices: Traditional Animal Holdings Classification in Qatar 2020 Towards Sustainable Food Security" in the Journal of Advanced Zoology. The paper addresses the administrative challenges facing traditional animal holdings in Qatar, such as insufficient land capacity, decreased levels of animal productivity, and a decline in economic returns. Additionally, it discusses the Ministry of Municipality's strategy of focusing on animal holdings to ensure the sustainability of this activity and maximize its role in national food security, and to support future policy actions. SESRI conducted a comprehensive agricultural census, with a model consisting of questions guided by the classification of holdings. The aim of this study is to assist in evaluating the performance of animal holdings using census data through their classification.



Animal Holding Classification Index - AHCI

Published Paper: "Design and Implementation of Survey Quality Control System for Qatar's First National Mental Health Survey: Case Study"

Catalina Petcu, Research Assistant, and her coauthors published a paper titled "Design and Implementation of Survey Quality Control System for Qatar's First National Mental Health Survey: Case Study" in JMIR Formative Research, a journal with an impact factor of 2.2, which is indexed in Scopus, PubMed, and the DOAJ. In this study, Petcu presented the quality control (QC) system implemented for the WMH Qatar Survey, the first WMH survey conducted during the COVID-19 pandemic in the Middle East. The objective of the QC process was to acquire high-quality data by reducing random errors and bias during data collection. The study focused on the design of the QC indicator system and its implementation and included the investigation process, monitoring the interviewers' performance, and applying quality-informed interventions. The QC data presented in this study shed light on the rigorous methods and quality monitoring processes implemented by the SESRI team while conducting this large-scale national survey on sensitive topics during the COVID-19 pandemic.



To read the article, kindly visit: <http://dx.doi.org/37653/10.2196>

Published Paper: Labour Reforms in Qatar: Continuity and Change in Perceptions and Attitudes Among Citizens and Migrant Workers

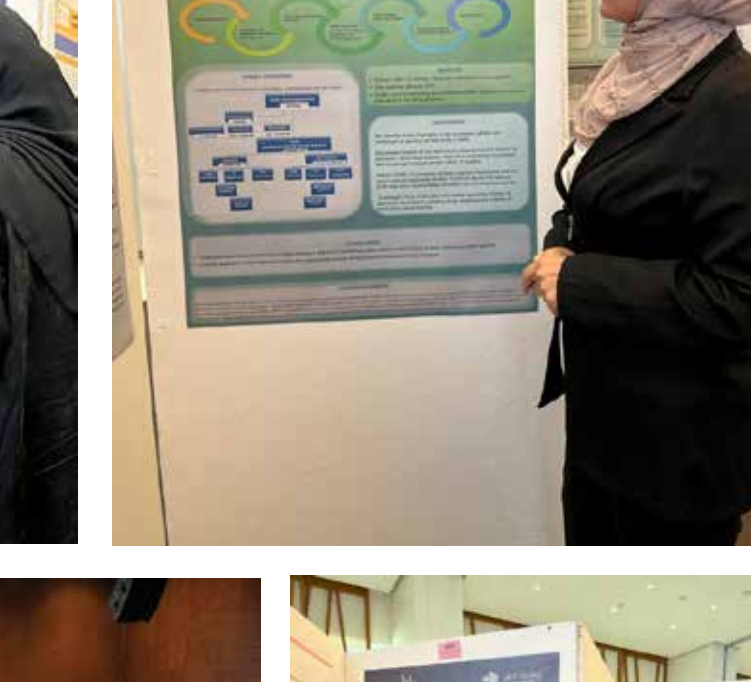
Prof. Abdoulaye Diop, Šemsia Jatić, Le Trung Kien, John Lee Partt Homles and others published a research paper entitled "Labour reforms in Qatar: continuity and change in perceptions and attitudes among citizens and migrant workers" in the Asian Population Studies. The publication is from SESRI's Qatar Labour Law NPRP project. To read the research paper please visit:

<https://www.tandfonline.com/doi/full/17441730.2023.2284017/10.1080?src=exp-la>

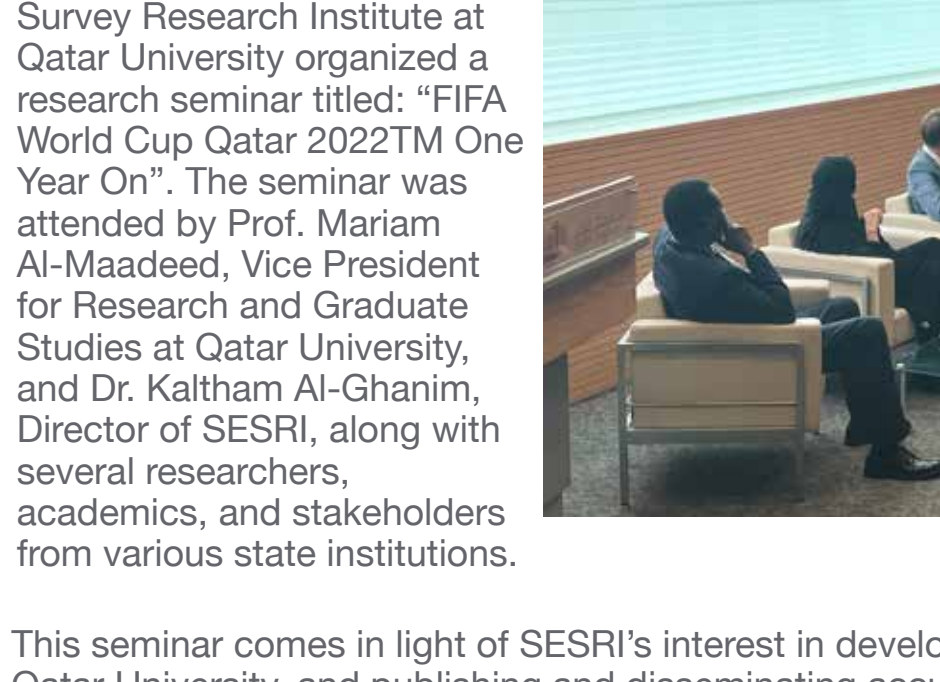
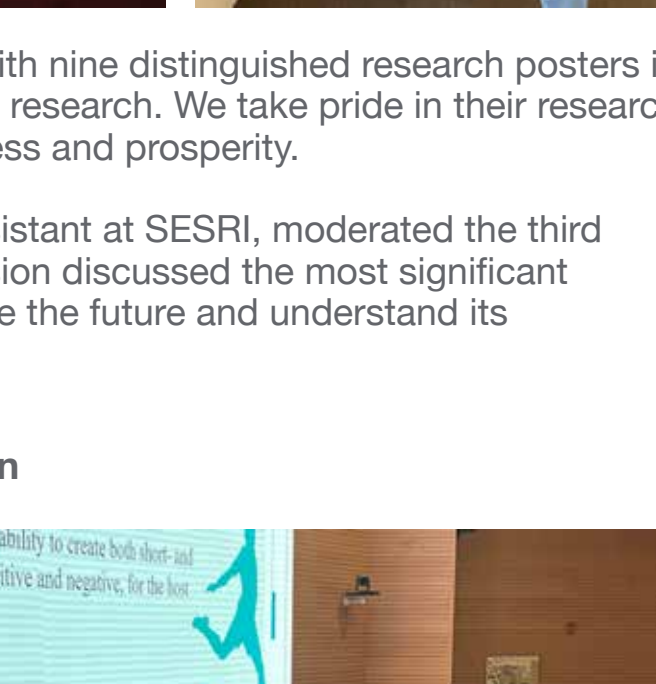
News

Participation in the Research Forum

SESRI participated in the Qatar University's Annual Research Forum and Exhibition 2023: Research for Future Aspirations. SESRI showcased a booth providing an overview of the institute and focusing on research updates. The booth had the honor of being visited by His Excellency Dr. Omar Al-Ansari, President of Qatar University, His Excellency Dr. Mohammed bin Saleh Al-Sada, former Minister of Energy and Industry, a representative from Sultan Qaboos University, a representative from ExxonMobil, and several other dignitaries.



A research team from SESRI, led by Dr. Ali Al-Kubaisi and the researchers Rima Charbaji, Maitha Al Naimi, Aisha Al Hamadi, Fahad Al Boinin and Mariam Al Thani, won best poster for the "Faculty and Postdoc: Social Sciences and Humanities" category, in the Forum, the poster was entitled "Factors Influencing OGD Adoption in Qatar: Unlocking Open Data & AI Potential".

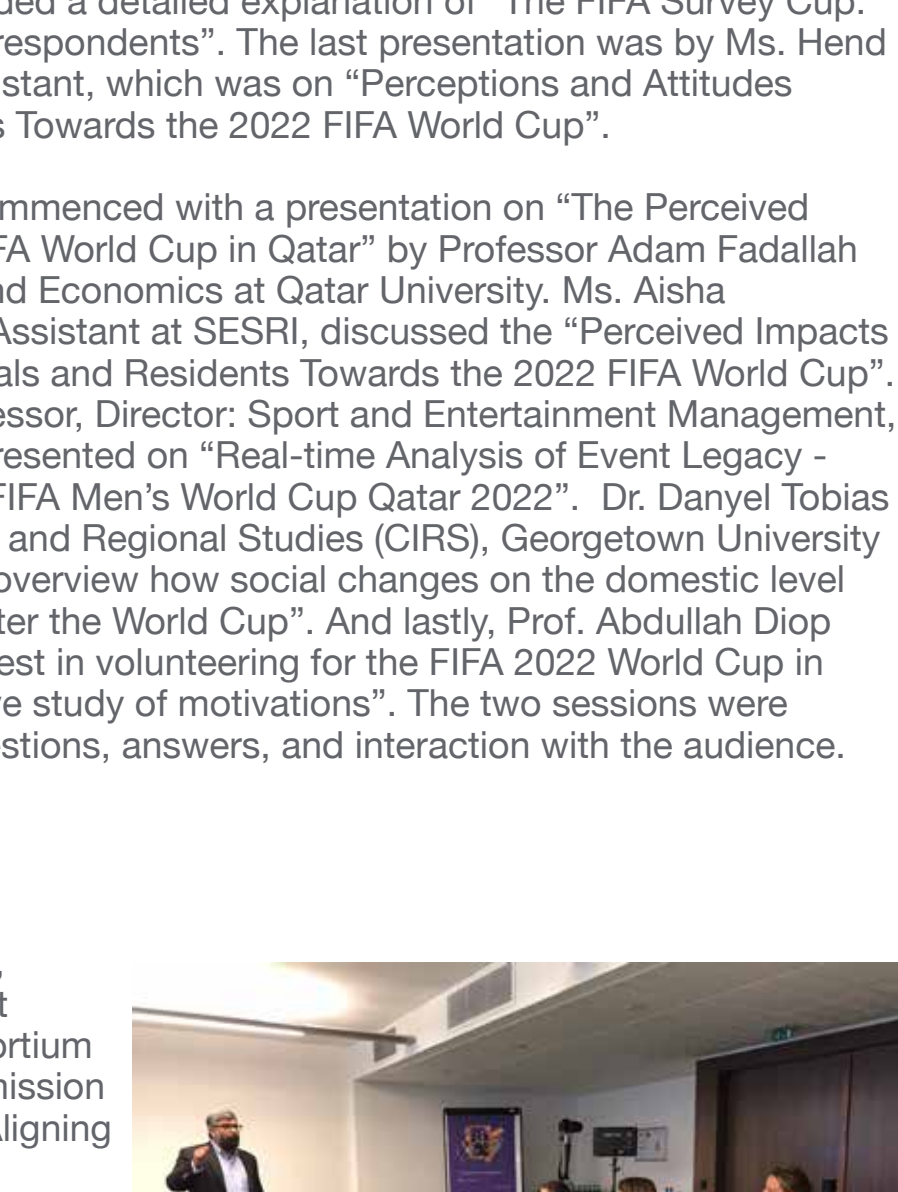


The institute's researchers also participated with nine distinguished research posters in the field of survey-based social and economic research. We take pride in their research achievements and wish them continued success and prosperity.

Additionally, Mr. Fahad Al Boinin, research assistant at SESRI, moderated the third session of the forum. The session discussed the most significant aspirations and challenges that help us foresee the future and understand its dimensions.

FIFA World Cup Qatar 2022™: One year On

In conjunction with the one-year anniversary of the FIFA World Cup Qatar 2022™, the Social and Economic Survey Research Institute at Qatar University organized a research seminar titled: "FIFA World Cup Qatar 2022™ One Year On". The seminar was attended by Prof. Mariam Al-Maadeed, Vice President for Research and Graduate Studies at Qatar University, and Dr. Kaltham Al-Ghanim, Director of SESRI, along with several researchers, academics, and stakeholders from various state institutions.



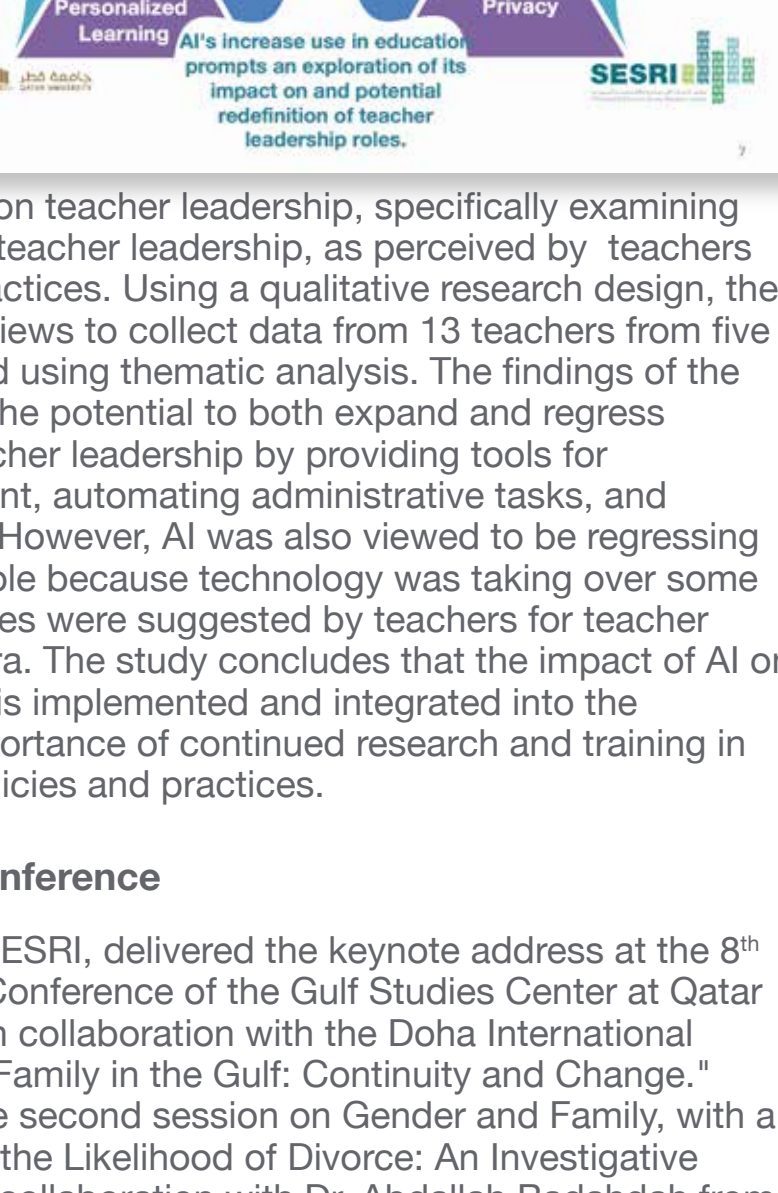
This seminar comes in light of SESRI's interest in developing research capabilities at Qatar University, and publishing and disseminating accurate survey data to the public, the research community, and decision-makers. SESRI also collaborates with several organizations, including the Supreme Committee for Delivery and Legacy, the origination that was responsible for the delivery of the required infrastructure and host country planning and operations for the FIFA World Cup Qatar 2022™. In addition to Hamad Bin Khalifa University, Georgetown University in Qatar, the International Labour Organization, among others.

The seminar included several panel discussions. The first session consisted of multiple research presentations. Prof. Abdullah Tloah, manager of the research department at SESRI, delivered a presentation titled "SESRI and the FIFA World Cup Qatar 2022™ Insights: A Decade of Survey Research Excellence". Additionally, Mr. Max Tunon, head of the ILO Project Office for the State of Qatar, International Labor Organization office in Qatar, presented on "ILO's work to support the labour reforms – before and after the World Cup". Other SESRI researchers, including Dr. Elmogiera Elawad, Section Head of Field Operations and Mr. John Lee Pratt Holmes- Section Head of CATI Operations, provided a detailed explanation of "The FIFA Survey Cup: SESRI's Playbook for reaching respondents". The last presentation was by Ms. Henda Al-Sulaiti- Senior Research Assistant, which was on "Perceptions and Attitudes among Nationals and Residents Towards the 2022 FIFA World Cup".

As for the second session, it commenced with a presentation on "The Perceived Impacts of Staging the 2022 FIFA World Cup in Qatar" by Professor Adam Fadallah from the College of Business and Economics at Qatar University. Ms. Aisha Al-Hammadi, Senior Research Assistant at SESRI, discussed the "Perceived Impacts of the FIFA 2022 among Nationals and Residents Towards the 2022 FIFA World Cup". Dr. Kamilla Swart - Assoc. Professor, Director: Sport and Entertainment Management, Hamad Bin Khalifa University presented on "Real-time Analysis of Event Legacy - Social Media Narratives of the FIFA Men's World Cup Qatar 2022". Dr. Danyel Tobias Reiche- Center for International and Regional Studies (CIRS), Georgetown University Qatar presented on "A general overview how social changes on the domestic level and foreign relations evolved after the World Cup". And lastly, Prof. Abdoulaye Diop gave a presentation titled "Interest in volunteering for the FIFA 2022 World Cup in Qatar: a nationally representative study of motivations". The two sessions were followed by discussions for questions, answers, and interaction with the audience.

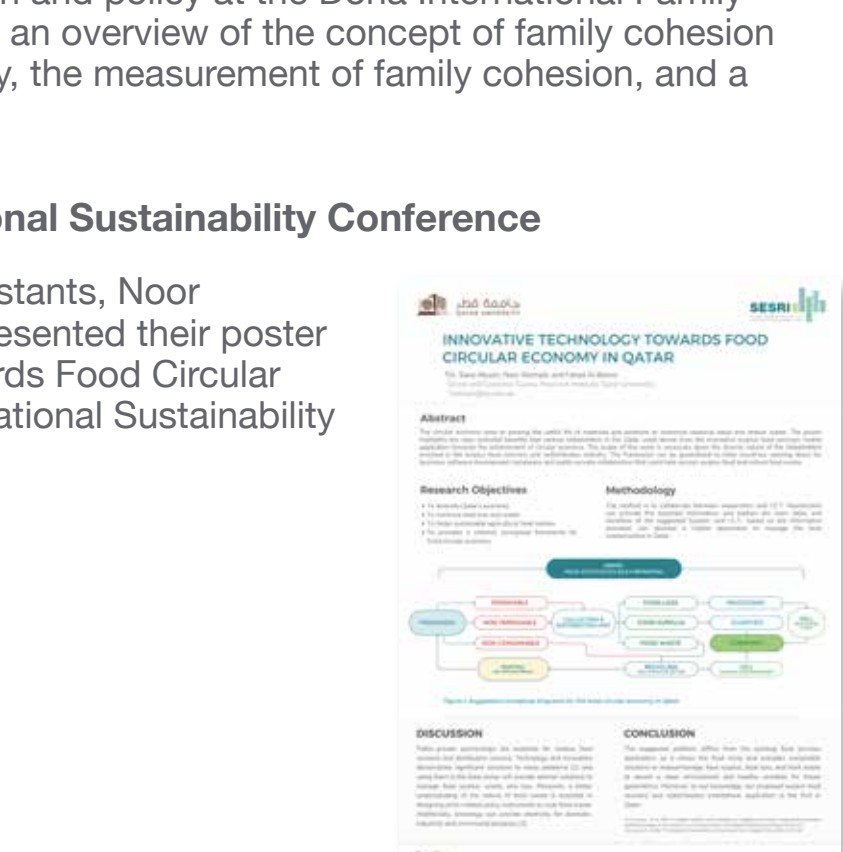
Presentation at Brussels

Dr. Muhammad Rashid Memon, Research Assistant Professor at SESRI attended the Fifth Consortium Meeting of the European Commission funded collaborative project: "Aligning Migration Management and the Migration-Development Nexus" (MIGNEX) at Brussels - Belgium, on 2nd and 3rd November 2023. Dr. Rashid delivered a presentation entitled "Indirect Effects of Migration", in which he briefed: "We define indirect effects of migration as the effects on development of changes in norms, values and perceptions brought about by the migratory experience. Specifically, we estimate (i) the indirect effects of migration on migrants' enrolment brought about by changes in gender norms and (ii) the effects of migration on civic and political participation brought about by changes in perception of the quality of governance. Methodologically, the use of instrumental variables allows us to (cautiously) interpret these effects as causal."



Participation in Artificial Intelligence: Opportunities and Threats from Multiple Scientific Perspectives Conference

Dr. Tarek El Chall Research Assistant Professor at SESRI presented in a conference entitled "Artificial Intelligence: Opportunities and threats from multiple scientific perspectives" on 25 November 2023, organized by the College of Arts and Sciences at Qatar University. The paper presented was a collaborative research paper entitled "Exploring the impact of AI on teacher leadership: regressing or expanding?"



This study aimed to investigate the impact of Artificial Intelligence (AI) on teacher leadership, specifically examining whether AI is expanding or regressing teacher leadership, as perceived by teachers who were using AI in their teaching practices. Using a qualitative research design, the study employed semi-structured interviews to collect data from 13 teachers from five countries. The data were then analyzed using thematic analysis. The findings of the study indicated that the use of AI has the potential to both expand and regress teacher leadership. AI can expand teacher leadership by providing tools for personalization, curriculum development, automating administrative tasks, and supporting professional development. However, AI was also viewed to be regressing teacher leadership, by narrowing the role because technology was taking over some of its aspects. Five sets of competencies were suggested by teachers for teacher leaders to sustain their roles in an AI era. The study concludes that the impact of AI on teacher leadership depends on how it is implemented and integrated into the education system. It highlights the importance of continued research and training in this area to inform future education policies and practices.

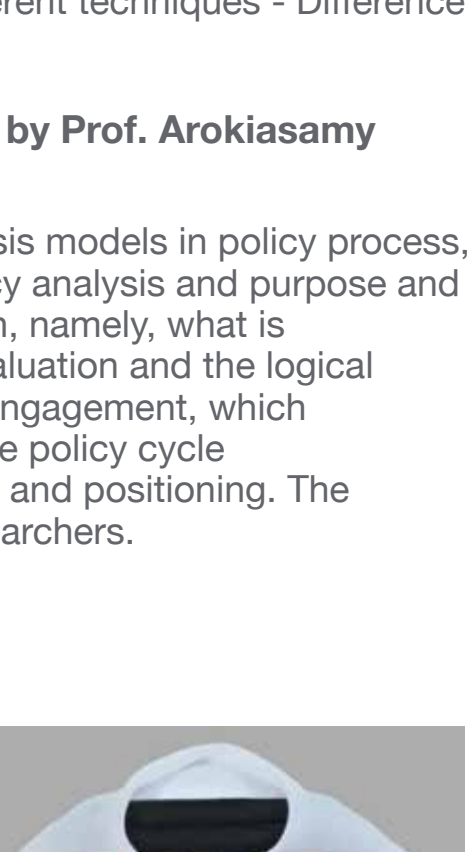
Participation in the Gulf Studies Conference

Prof. Kaltham Al-Ghanim, Director of SESRI, delivered the keynote address at the 8th Annual International; Interdisciplinary Conference of the Gulf Studies Center at Qatar University on 19-20 November 2023, in collaboration with the Doha International Family Institute under the theme "The Family in the Gulf: Continuity and Change." Prof. Al Ghanim also participated in the second session on Gender and Family, with a presentation titled "Factors Increasing the Likelihood of Divorce: An Investigative Study of Married Couples in Qatar," in collaboration with Dr. Abdallah Badahdah from the University of South Dakota in the United States.

Additionally, Dr. Buthaina Al Khelaifi, senior research assistant at SESRI, presented a paper on the study of family cohesion in Qatar in collaboration with Dr. Khaled Al-Nama, director of family research and policy at the Doha International Family Institute. The presentation covered an overview of the concept of family cohesion and its importance in Qatari society, the measurement of family cohesion, and a review of the study's key findings.

Participation in the 4th International Sustainability Conference

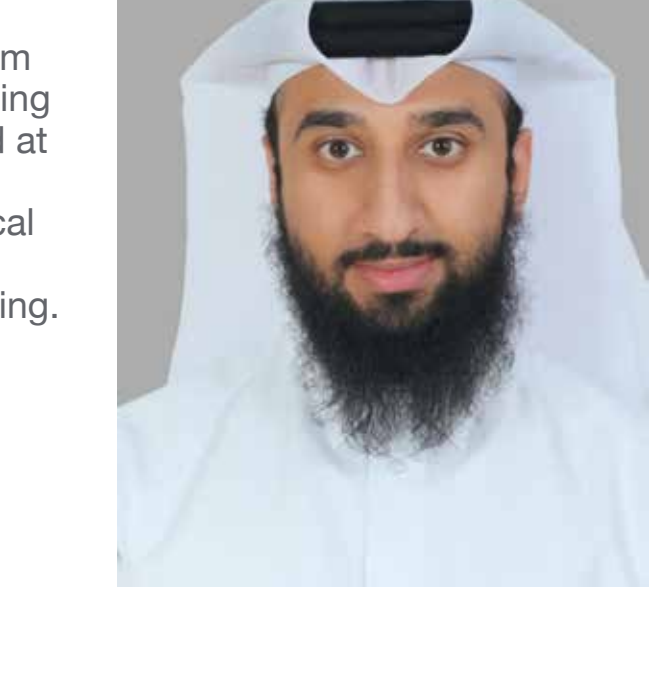
Dr. Sana Abusin, and research assistants, Noor Al-Emadi, and Fahad Al-Boinain presented their poster titled "Innovative Technology Towards Food Circular Economy in Qatar" at the 4th International Sustainability Conference.



Workshops

GLS Workshops

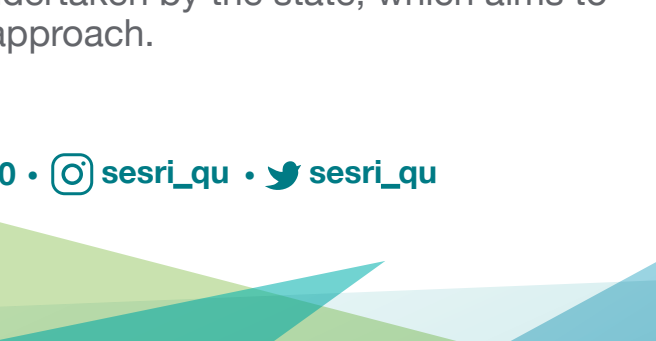
In cooperation with Graduate Learning Support (GLS) at Qatar University, a number of SESRI researchers delivered a group of live webinars:



"Easy Statistics for All" delivered by Dr. Tarek El Chall Research Assistant Professor, on Tuesday, 7 November, 2023. The webinar's purpose was to break the complexities of statistics and make it accessible to a wide audience. The webinar aimed to break down the barriers and present statistical concepts in a clear, simple, and understandable manner for students, professionals, or anyone interested in learning statistics. This webinar was designed to make statistical concepts easy to grasp and applicable to real-world scenarios. Slides mixed theoretical backgrounds with real life examples. Twelve students attended from different schools, and the workshop concluded with questions and answers.

"Impact Evaluation in Economics" on Thursday, 16 November 2023, by Dr. Muhammad Rashid Memon, Research Assistant Professor at SESRI

Financial Flows targeted towards the development world reached almost 1 Trillion Dollars in 2022. These include foreign aid, grants and loans from multilateral organizations and remittances. The sheer size of these flows requires that we understand the impact of these flows on people's welfare. The Economist's toolkit workshop provides a number of techniques with high levels of rigor to do this and the exact technique depends on the question and the context. We will use one Qatari and one non-Qatari context to see the application of two different techniques - Difference and Difference and Regression Discontinuity".



Policy Analysis Models, Monitoring, and Evaluation, by Prof. Arokiasamy Perianayagam on November 21, 2023

This lecture covered the following topics: (a) policy analysis models in policy process, which focused on the process of policy formulation, policy analysis and purpose and cost-benefit analysis, (b) policy monitoring and evaluation, namely, what is monitoring and evaluation? Criteria of monitoring and evaluation and the logical framework and results chain, and (c) policy stakeholder engagement, which addressed the focus areas stakeholder engagement in the policy cycle multi-stakeholder policy model and stakeholder mapping and positioning. The lecture was attended by interested QU students and researchers.

SESRI Achievements

Patent

We Congratulate Mr. Abdolrahman Alharmi from the Research Department at SESRI, for obtaining a USPTO patent for an innovative straw aimed at minimizing the air swallowed by users during consumption. This invention addresses a critical aspect of straws, prioritizing user comfort and health by reducing the intake of air while drinking.

Obtaining a Doctorate Degree

We congratulate Ms. Buthaina Al Khelaifi, senior research assistant from the Research Department at SESRI, for obtaining her Ph.D. from the Gulf Studies Program at the College of Arts and Sciences, Qatar University. Her research dissertation is titled: "Citizen-State Relations in Qatar in The Age of Austerity." The dissertation explores the relationship between citizens and the rentier state, shedding light on citizens' political opinions and their views on various issues connecting them to the state, such as democracy, economic reforms, and more. Ms. Al Khelaifi adopted both quantitative and qualitative research methodologies in data collection and analysis, which in turn gave a clear picture of citizens' perspectives on all the reformative and political changes undertaken by the state, which aims to shift the economy away from a purely rentier approach.